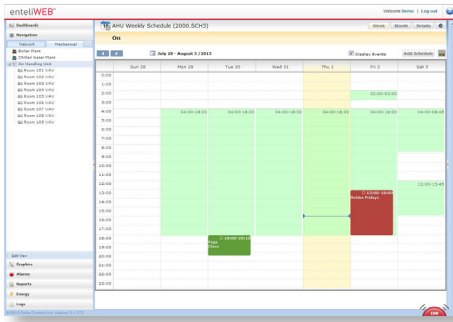




Enterprise Facility Management Software



# ► How your environment can benefit from enteliWEB systems



Scheduling Dashboard

## Scheduling

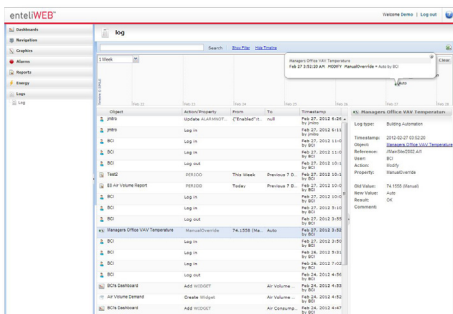
Event scheduling in enteliWEB allows occupancy to be associated with specific date ranges or recurrences.

- Special events or room rentals can be scheduled as one-time-only events.
- Event descriptions i.e. "Yoga Class" are displayed on the event time block.
- Colors distinguish between weekly schedules, ON events and OFF events.
- Date ranges, recurring dates and recurring week and day events are supported.

## Visualization Tools

enteliWEB visualization tools provide multiple methods of compiling and conveying the same data, so that individualized company styles and task assignments can be easily accommodated.

- enteliVIZ allows you to create intelligent visualizations and equipment graphics in your web browser.
- enteliWEB is backwards compatible - simply transfer your ORCAweb graphics to enteliWEB and you're up and running, saving you money.
- Graphics are fast and fluid making for a better user experience.



Audit Log

## Audit Log

A single consolidated log is available in enteliWEB to record operator actions, alarm transitions and device offline records.

- Operators may troubleshoot by cross-referencing log entries from different parts of the system in a single view.
- A timeline chart allows operators to visualize multiple log entries.
- Operators can search through records quickly or use the Advanced Filter to find specific log entries.

## The Problem

Your Building Automation System is growing in size and complexity. From multiple university campuses and school boards, to multi-tenant commercial buildings and hospital groups. Add to that the integration of HVAC, lighting, access, energy management and other facility systems.

- So how do you manage a network that big?
- How do you effectively visualize the important data from all those buildings?

**enteliWEB**  
is the solution

# ▶ enteliWEB gives you a master view of your building operations

### enteliWEB gives you a single management solution

enteliWEB effortlessly connects to all your facilities under one login. Bringing all your buildings, systems and reports under one facility management umbrella saves engineering and maintenance time. It allows operators to work efficiently as they don't have to work with multiple unconnected systems.

### enteliWEB helps you to make sense of data easily and quickly

With all these interconnected systems comes a lot of data. enteliWEB collects and organizes this information, displaying it within a dashboard visualization. Dashboards customized to your needs exist at every level in enteliWEB.

- Enterprise dashboards allow Facility Managers to quickly evaluate their systems based on KPIs.
- Personal dashboards provide an easy way for every operator to view the building the way they want.
- System dashboards provide a much richer experience than graphics alone, by combining operational views such as graphics, alarms, point lists, charts and other tools all on one page.

### Benefits

- Manage multiple sites from a single login. No need to worry about duplicate addresses or networking everything together. All you need is an IP address for each site.
- Manage integrated HVAC, lighting, access and other systems with one operator workstation.
- Alarm Management is designed to quickly and efficiently manage alarms from different sites.
- Dashboards provide simple visual summaries of facility information that allow you to drill down and take action.
- enteliWEB comes with built in development support for dashboards and reports, so that our partners can add functionality and customize the enteliWEB experience according to your organization's needs.
- Mobile view for when you're on the move - Standard web technologies allow enteliWEB to be viewed on iPad and Android tablets.



Enterprise Dashboard



Mobile Dashboard



System Dashboard

## Save Money

enteliWEB works to save you money.

- Control every aspect of your building through a single piece of software. Holistic optimization strategies can be easily implemented.
- Buy only the components that you need for your building. enteliWEB's modular structure allows you to purchase only the features that you need on a case by case basis.
- Unlimited upgrades without the purchase of new software. For a fraction of the product cost, a yearly license subscription ensures that any updates, even entirely new features, are available as soon as they are released. Through the continuous development of the enteliWEB, your software will be as current tomorrow as it was when first installed.
- Through the enteliWEB framework, system fault diagnostics and enterprise level energy monitoring and reporting is available through the Coppertree Analytics add-on modules. These powerful tools utilize the same data and network already established for your Facility management saving on infrastructure and installation costs.

## Be Flexible

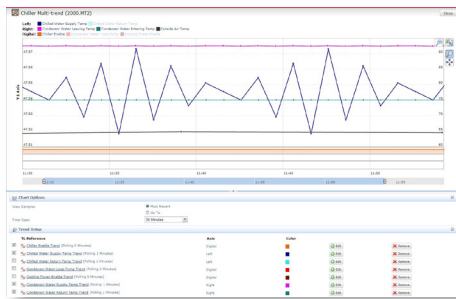
enteliWEB is both flexible and customizable, meaning it's the right solution for you.

- View and manage HVAC, lighting, access and other systems from one operator workstation.
- Create custom dashboards for every user to display all the information you need on one page, and our simple user interface graphics mean you don't need to be a programmer to achieve this!
- Create your own widgets, you can even put the interface of third-party systems into a widget window – so you don't need to have multiple packages and screens open, giving you the convenience of an 'all in one view' of your key operating systems.
- Use the configurable reports in enteliWEB or design custom reports using an industry standard open source report design package.
- Web-based access, and tablet optimized dashboards make enteliWEB easy to view on an iPad or Android tablet.
- Centrally manage multiple facilities from all over the city or country from one location.

## Learn Quickly, Work Efficiently

enteliWEB is simple and easy to use.

- Intuitive layout and navigation so you can view a facility, floor or room and see which equipment can be adjusted to control the environment in that area, usually within 2 clicks.
- Get to where you want quickly; click on an alarm and see the system in question.
- Graphics, alarms, reports, scheduling – system management all in one place and can be assigned to relevant people.
- Dashboards are automatically created when the meters are set up.
- Combine multiple widgets on one screen to view needed information in one place.
- Easy to use graphics makes it clear to see where you are and highlights important information quickly.



Facility Management

## Customer Benefits

- Manage multiple sites from one seat.
- Easy-to-use graphic interface makes it clear where you are and highlights important information quickly.
- Intelligent visualizations automatically display trends that pinpoint the time of the alarm and display the history of the alarm.
- Assign alarms directly to maintenance staff from within the alarm page.
- A real-time audit log maintains records of every login and activity for complete transparency and accountability.

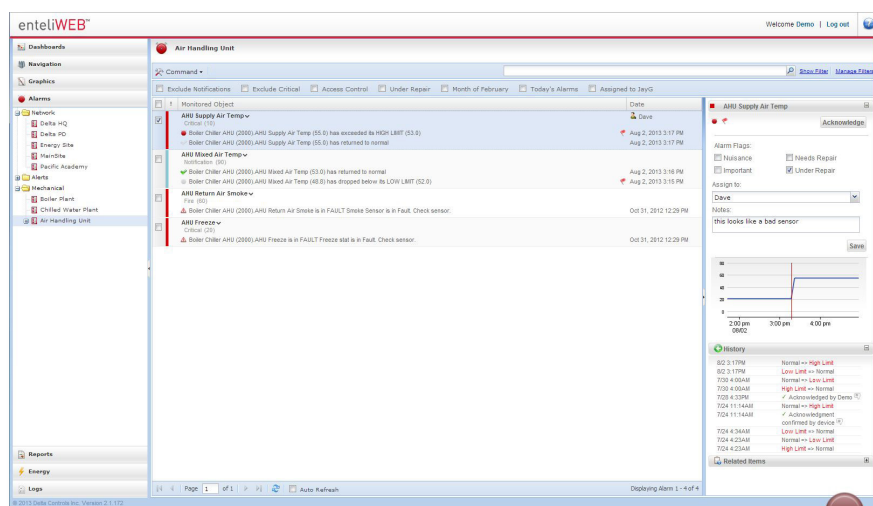
## Facility Management

The enteliWEB navigator automatically scans the BACnet network and presents devices in a logically-arranged network tree. This structure makes it easy for the Facilities Manager to monitor and command the building's control system.

## Alarm Management

With enteliWEB, alarm management is made simple with intelligent visualizations and automatic presentation of trends and related items. It organizes and structures the alarm system allowing operators to manage alarms from multiple sites more easily.

- Alarm management is simplified with filtering and management features.
- E-mail notification may be set up based on a customizable filter. Multiple email notification rules may also be setup on a per user basis.
- Acknowledge multiple alarms and set parameters on multiple alarms at the same time.



Alarm Management

## Coppertree Energy Management

The Kaizen Energy module is one of a new suite of enteliWEB options from Coppertree Analytics that brings enterprise level energy management into the single-seat framework of enteliWEB.

This enterprise energy management package makes it easy for anyone to understand the energy usage of their building. Leveraging the same customizable dashboard interface as enteliWEB, Kaizen Energy makes it easy to visualize your energy usage, set target energy goals and compare your energy usage against historical baselines.

Connect to either physical energy meters or create virtual sub-meters from enteliWEB's HVAC data points and ensure that you are getting the complete picture.

For more information and to explore the other Kaizen modules, please visit [www.coppertreeanalytics.com](http://www.coppertreeanalytics.com).



COPPERTREE  
ANALYTICS

# ► Visualize your building your way with enteliWEB's facility management application

## Dashboard Visualization

Walk in, sit down and know everything! Dashboards provide at-a-glance summaries of your facility. With the ability to create and customize dashboards, your workstation software will always be useful and relevant. With enteliWEB, you're the boss.

## What is enteliWEB?

enteliWEB is a Web-based, native BACnet® application that combines the power of enterprise dashboards with easy-to-use facility management tools. Customizable building management dashboards and powerful system reporting give managers the tools to effectively maintain their buildings and lower costs. Task-driven alarm management and system dashboards allow operators to quickly visualize and prioritize their work, keeping the facility running comfortably and efficiently.



Customized System Dashboard



To find out about our purchasing models contact us now at **1-604-574-9444**

Alternatively visit our website at **[www.deltacontrols.com](http://www.deltacontrols.com)**

## Facility Management

- Monitor and adjust HVAC, lighting, access and other systems.
- Maintain a robust schedule so that rooms and buildings are ready when they're occupied.
- Connects to devices directly, monitor and address performance issues from one mobile-friendly platform.

## Modular Architecture

- Choose the features you need to match the requirements of your business
- Add components as your budget or facility changes.
- Integrate different BEMS and peripheral networks into a unified software suite.